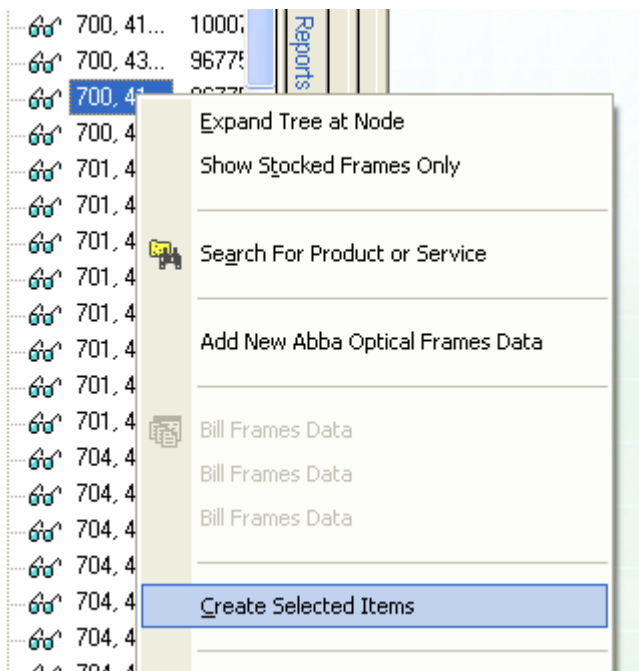
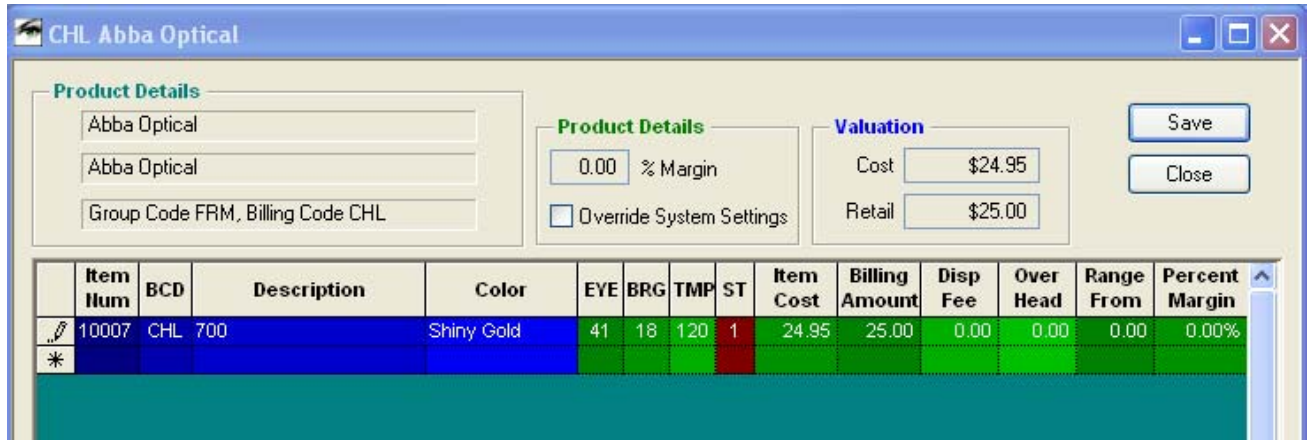


Visions: Entering Frames Inventory using Frames Data


1. Search for frames in Frames Data
 - a. Go to products Tab
 - b. Open + Frames Data
 - c. Open Supplier
 - d. Open Sub Category (plastic, metal, children's etc.)
2. Find Frame
3. Right click – create selected item (this will put frame on to grid)



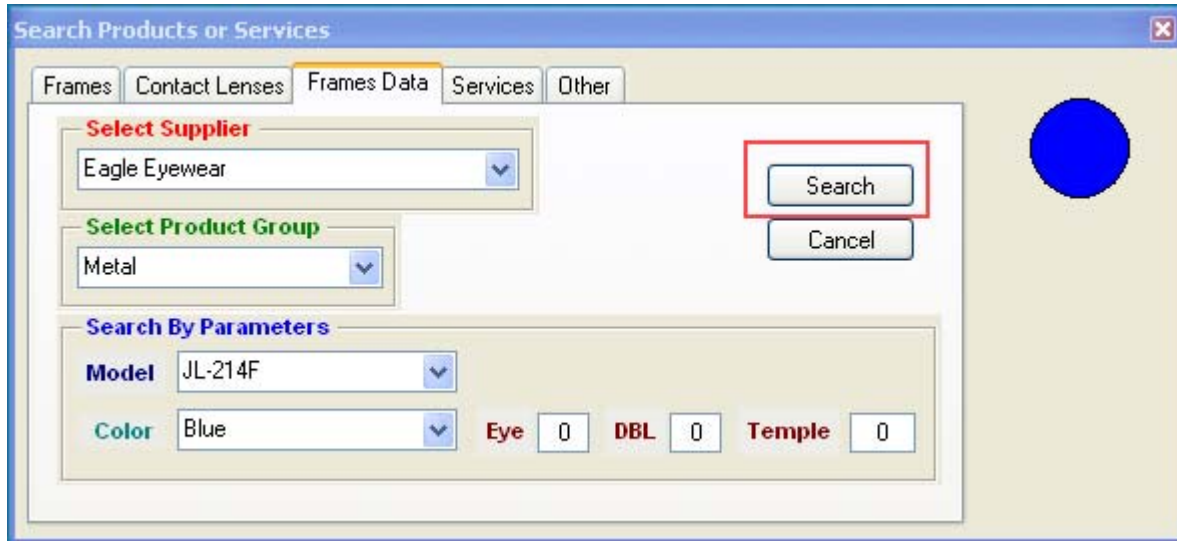
4. Change BCD from FRD to correct BCD code (see chart below for correct code per category, once you change the first line it will automatically change for everything you enter after that)



<u>BCD</u>	<u>CATEGORY</u>
CHL	Children's
CLP	Clip-On
COM	Combination
CPO	Sun-clip
MET	Metal
PLA	Plastic
REA	Reading Glasses
RIM	Rimless
SAF	Safety
SEY	Sport Eyewear
SGL	Sunglasses
SPT	Sport

5. Enter all your frames for this category. You can enter by searching for frames in Frames Data (as per step 1) or you can use the search icon (binoculars). 

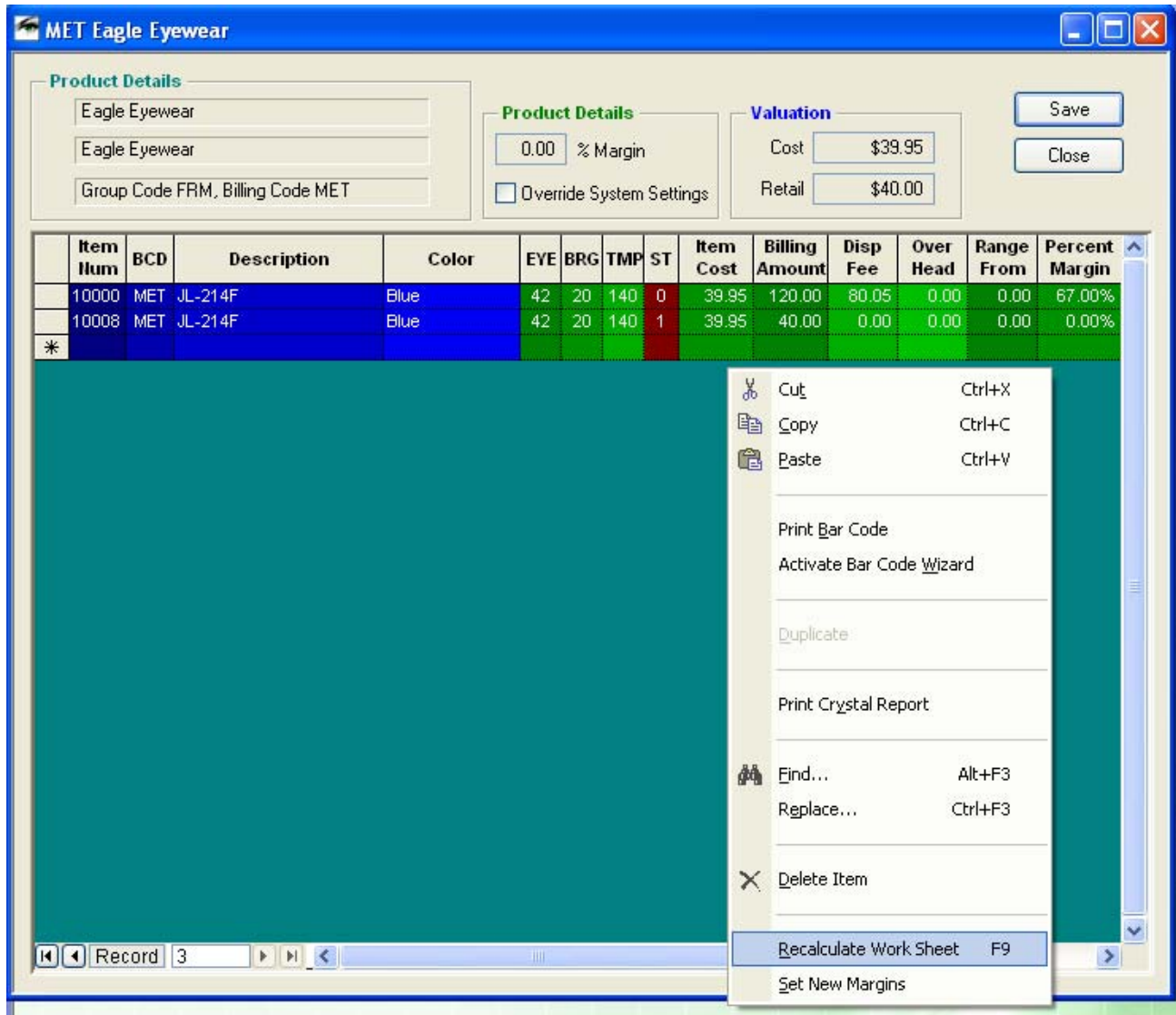
To use Binoculars, click on icon, this will bring up a search box, go to frames data tab on top, and fill in Supplier, Product, Model and Color, click search. This will highlight the frame in the product tree, you can now right click, and create selected item. If the frame is not there you can enter manually.



To enter frames manually fill in Description, Color, Eye, Brg, TMP, ST, and Item Cost

****Remember to change BCD code***

6. Right Click in grid, and Recalculate Worksheet.



7. Save worksheet.
8. Select frame by highlighting it, Print Bar Code.
9. Re-Fresh your Product Tree